



Glenshaw

Presbyterian Church

FEBRUARY 9, 2025, 10:30 AM
6TH SUNDAY AFTER EPIPHANY

GATHER IN GOD'S NAME

PRELUDE

This Little Light of Mine

arr. Calvin Taylor

WELCOME AND ANNOUNCEMENTS



CALL TO WORSHIP

Kip Fowler

We have come from different backgrounds on various roads to get here.

But we are all here seeking an experience of the holy.

Listen for the promise of God's steadfast love and God's faithfulness.

We are listening for God's call in our lives.



HYMN OF PRAISE

Come! Live in the Light!

Hymn 749

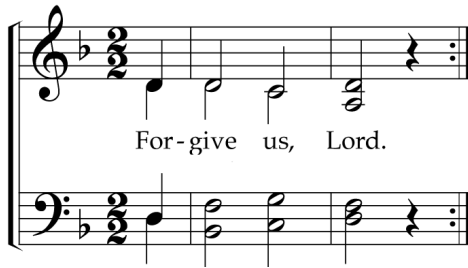


CALL TO CONFESSION



UNISON PRAYER OF CONFESSION

Hymn 431, v. 1



SILENT CONFESSION



ASSURANCE OF PARDON



THE PEACE OF CHRIST

The peace of Christ be with you.
And also with you.



CONGREGATIONAL RESPONSE *Gloria Patri*

Hymn 581

THE WORD

TIME FOR YOUNG DISCIPLES

PRAYER FOR ILLUMINATION

OLD TESTAMENT READING

Isaiah 6:1-8

NEW TESTAMENT READING

Luke 5:1-11

SERMON

Epiphanies About Resources

Rev. Emily Cooper



HYMN

Here I am, Lord

Hymn 69



AFFIRMATION OF FAITH

Apostles' Creed

Hymnal Page 35

GIVE THANKS TO GOD

OFFERING OUR GIFTS TO GOD

*Please place your offering in the plate at the back of the sanctuary
as you exit after worship or consider giving online at www.glenshawchurch.org.*

OFFERTORY

Jesus Is the Light!
Chancel Choir

Patti Drennan

†

DOXOLOGY

Hymn 606

PRAYER OF THANKSGIVING AND DEDICATION

SHARING THE JOYS AND CONCERNS OF THE CONGREGATION

PRAYERS OF THE PEOPLE AND THE LORD'S PRAYER

Hymnal Page 35

GO IN GOD'S NAME

†

SENDING HYMN

We Are Marching in the Light of God

Hymn 853

†

CHARGE AND BENEDICTION

†

POSTLUDE

Heavenly Sunlight

arr. Mark Hayes

WORSHIP NOTES

THE CHANCEL FLOWERS are dedicated to the Glory of god in honor my son **George Schindler's passing and birthday and in memory of Patrick Salmon, husband.**
Given by Sandra Salmon.

VISITORS, please **complete a visitor card found** in the pew rack and place it in the offering plate. We are glad to have you worship with us!

ORDINARY TIME PARAMENTS

This set of paraments is comprised of many shades of green which symbolize new life and growth. Running through the field of many shades and textures of green, is a vine - a symbol of Christian growth that recalls John 15:5, "I am the vine, you are branches."

WE RECORD OUR SUNDAY WORSHIP ATTENDANCE. We invite each member of your family in attendance to sign the friendship pad at the end of each pew. We are glad to have you worship with us!

CHILDREN'S CHRIST CANDLES

Parents and grandparents, please have your children look for the Christ candle near the activity table. They can light their own tea candle and place it with the larger one.

PERSONAL PRIVACY DURING LIVESTREAM OF SUNDAY WORSHIP

It is important for our members, guests, and visitors to be aware that we livestream our worship service. If you are joining us for in person worship but prefer not to appear on the livestream video, we have 2 specific areas in the sanctuary where you can sit comfortably and not appear on the video. The first area is the left transept on the main floor and the second is the center balcony area. An usher will be happy to help you find these areas.

ANNOUNCEMENTS

FELLOWSHIP IS BACK!!!

Stop in the parlor after worship to visit and have a little snack before going home. For a change during the cold month of February, our beverage will include coffee, hot water for tea and hot chocolate! Thank you for signing up to take a few Sundays to host this time together!

SOUPER BOWL OF CARING

We are again collecting for the Souper Bowl of Caring this today in case you would like to still donate. This collection benefits the Bread of Life Food Pantry for the people in our local community by providing them with much-needed food. Thank you to all who contribute to this event and your ongoing support to the Bread of Life Food Pantry.

PER CAPITA for 2025 is \$38.11.

CHANCEL FLOWERS

We are now accepting orders for chancel flowers to brighten our sanctuary during our Sunday services. The cost to sponsor both arrangements dedicated to a loved one, to the Glory of God, or any dedication so desired each week is \$55. **To order flowers, please contact Jennifer in the church office** by calling 412-486-8400 ext. 110 or emailing jennifer@glenshawchurch.org by 4:00 p.m. on the Tuesday before your desired Sunday.

THE EARLY LEARNING CENTER IS LOOKING FOR SUMMER PROGRAM HELP

The Glenshaw Presbyterian Church Early Learning Center is looking for help for this year's upcoming Summer Program. The program starts June 9th and ends August 22nd. 4 days a week 7-5. Experience in childcare is a must. For more information please contact our director, **Fawn Pignoli** at fawn@glenshawchurch.org or Pastor Emily.

LITURGISTS NEEDED

We need to expand our list of liturgist volunteers. Each Sunday we are grateful to everyone who aids in leading worship. One important role is that of liturgist. This person helps to lead the liturgy along with Pastor Emily. Any member is able to participate, as you don't need to be an Elder or Deacon to assist, and the liturgy text will be provided for you. **Please sign up today on the sheet in the narthex!**

DONATE TO THE GPC EARLY LEARNING CENTER THROUGH UNITED WAY

Dear GPC Members,

Every day dozens of parents for trust us with their children and we feel truly honored to have them in our Center. Last year the United Way added the Early Learning Center as an agency to accept donations. If you contribute to the United Way, you can now designate your contribution to the Glenshaw Presbyterian Church Early Learning Center. The code for the ELC is 17905449. Thank you for considering this. All funds received will be used to buy supplies, toys, etc. for the children.

Respectfully,
Fawn Pignoli
GPC ELC Director

HOMEBOUND MEMBERS OF GLENSHAW PRESBYTERIAN CHURCH

Our members enjoy the cards and/or visits from each one of you. Please place them in your heart and let them know they are being thought of by reaching out to them. Below is an updated homebound member list with current addresses and telephone numbers. Please contact the church office if you know someone to include on the list of people that might like to hear from us.

Sandy Crynack

304 S. Magnolia Drive
Glenshaw, PA 15116
(412) 487-6204
Birthday: September 5

Dr. Robert and Karen Ford

High Pointe at Rebecca Residence
1871 High Pointe Lane, Apt. 1306
Allison Park, PA 15101
724-939-3773
412-310-1655 (Bob cell)
412-480-1913 (Karen cell)

Ann Nicklas

1490 Highland Ave
Glenshaw, PA 15116
(724) 321-4530 (cell)
Birthday: February 19

Grace Rihn

1330 Lindbergh Ave
Pittsburgh, PA 15223
412-486-5788
Birthdate: June 1st

Margaret Wiegand

Atria at Cranberry Woods
3020 Fairport Lane Apt. 241
Cranberry Township, PA 16066
(724) 776-2675
Birthday: May 21

THIS WEEK AT GLENSHAW PRESBYTERIAN CHURCH

TODAY	February 9, 2025
	9:30 AM Chancel Choir Rehearsal in the Sanctuary
	9:30 AM Adult Sunday School
	10:30 AM Sunday Worship Service
	11:00 AM Fellowship in the Parlor
MONDAY	February 10, 2025
	5:00 PM Early Learning Center Board Meeting
TUESDAY	February 11, 2025
	1:00 PM Properties Committee Meeting
	6:30 PM Deacons Meeting
WEDNESDAY	February 12, 2025
	7:00 PM Music and Worship Meeting
THURSDAY	February 13, 2025
	5:30 PM The Neighborhood Table
	6:30 PM Carillon Choir Rehearsal
	7:30 PM Chancel Choir Rehearsal
SUNDAY	February 16, 2025
	9:30 AM Adult Sunday School
	9:30 AM Carillon Choir Rehearsal in the Sanctuary
	9:45 AM Chancel Choir Rehearsal in the Sanctuary
	10:30 AM Sunday Worship Service
	11:00 AM Fellowship in the Parlor

**The Church Office is open
Monday through Thursday 9 a.m. to 3:30 p.m.**

Welcoming all who seek to know God,
Glenshaw Presbyterian Church invites
individuals and families to join in our
journey of faith as we share the love of
Jesus Christ with one another, the
community, and the world.



The GPC Session

Sherry Martin, Clerk of Session

Class of 2025

Alan Cridge
Mark Held
Sherry Martin
Donna Walker

Class of 2026

Carla Berg
Ray Hack
Betty Miller
Tom Tabor

Class of 2027

Larry Bock
April Klein
Chick Pfeiffer
Alain Richardson

----- CHURCH STAFF -----

Rev. Emily Cooper, *Pastor*

Cell phone: 412-334-2730

Corinne Adkins, *Director of Music & Organist*

Lois Cridge, *Business Manager*

Jennifer Zanke, *Office Manager*

Fawn Pignoli, *Director of the GPC Early Learning Center*

Frank Maksin, *Property Manager*

Lia Knight, *A/V Tech*

300 Glenn Ave • Glenshaw, Pennsylvania 15116 • 412.486.8400

E-mail: gpc@glenshawchurch.org

www.glenshawchurch.org • www.facebook.com/glenshawchurch